

---

All –

There are two new healthcare applications released for the Palm WebOS platform. Please share this information with your counterparts and customers.

Regards,

Jim Dudenhoefer  
Palm, Inc.

---

## PEPID

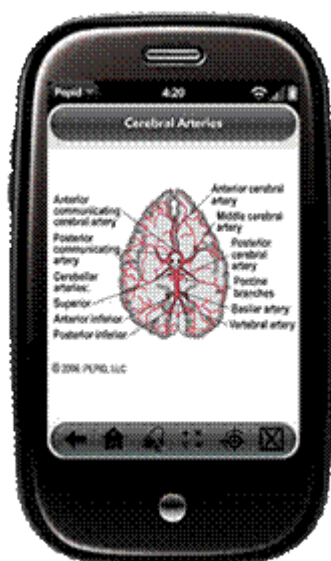
### PEPID for Palm Pre has Arrived

PEPID has expanded its mobile platform to include the Palm Pre. The new PEPID application is designed specifically for the device's WebOS, allowing healthcare providers to gain access to life saving protocols, drug interactions and other vital patient care information wherever they go, directly from their device.

The new Palm Pre application includes all the trusted clinical content and tools customers are accustomed to from PEPID, in addition to our Platinum Suite features. PEPID Platinum Suites include a differential diagnosis generator that allows healthcare professionals to select symptoms and generate a list of possible diagnosis and our laboratory manual in addition to our disease profiles, drug database, drug interactions generator, dosing and medical calculators.

Clinicians who purchase PEPID Palm Pre during January or February 2010 will receive an additional three months free of charge.

<http://www.pepid.com/press/palmpre.asp>



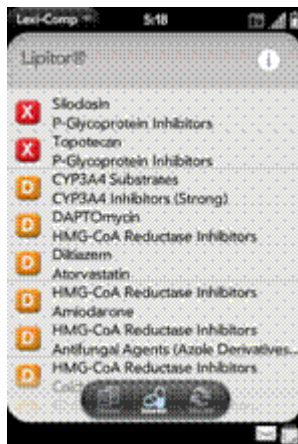


## Lexi-Comp Clinical Database

Keep updated with Lexi-Comp's trusted clinical knowledge, now at the touch of a button! This application includes 30-days of access to Lexi-Drugs & Lexi-Interact, their two most popular clinical databases.

Lexi-Drugs is Lexi-Comp's most comprehensive drug database, addressing all patient populations and clinical specialties including anesthesiology, cardiology, internal medicine, geriatrics, oncology, psychiatry, and more.

Lexi-Interact allows you to perform an analysis of a patient's entire drug and natural product profile and identify potential interactions. Fully referenced and evidence-based, this application facilitates a patient-specific, risk-to-benefit assessment and includes detailed patient management and monitoring guidelines. After 30 days, obtain an access code directly from Lexi-Comp for continued access by visiting [www.lexi.com](http://www.lexi.com).



---

*Jeff*

**Jeff Muglia - Public Sector Account Manager**  
Mobile - 248-390-0930 Email [jeffrey.t.muglia@sprint.com](mailto:jeffrey.t.muglia@sprint.com)  
27755 Stansbury Blvd. Farmington Hills, MI 48334